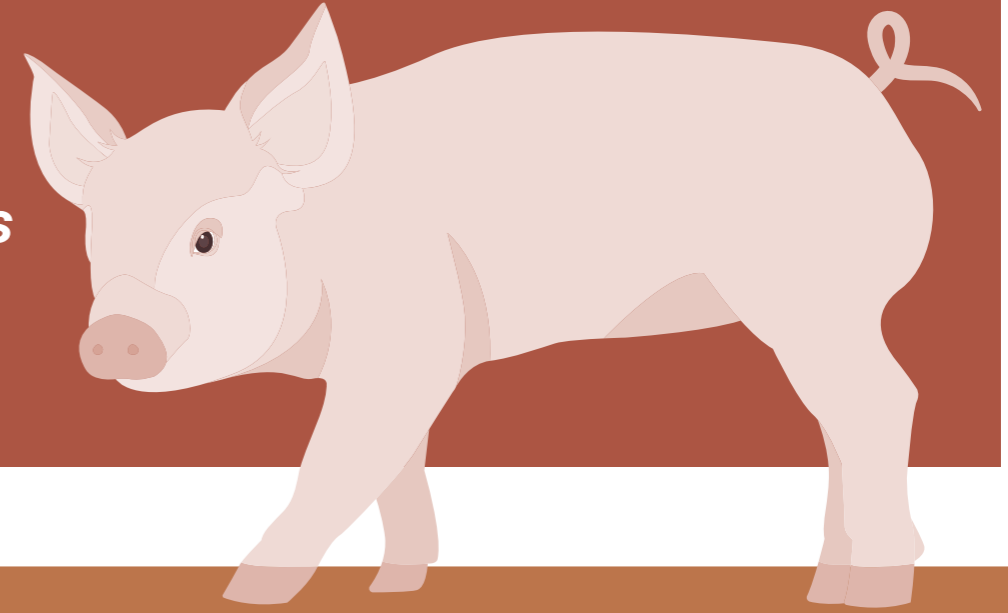


# Walk through an RSPCA Approved farm assessment with us



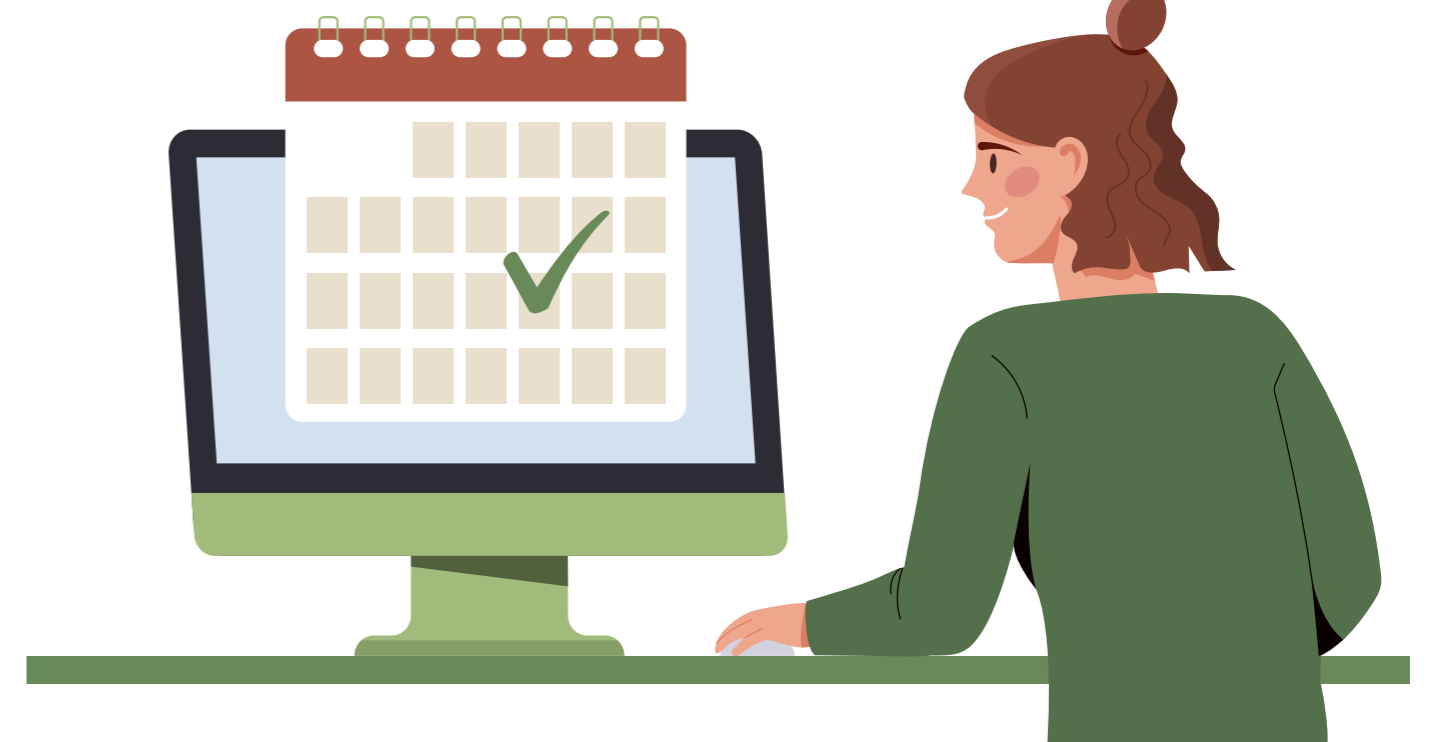
Participants in the RSPCA Approved Farming Scheme are committed to **raising animals to a higher welfare standard than is legally required**, focusing on **improving the lives of Australia's farm animals**.

Farms certified against the RSPCA Approved Standards are assessed by RSPCA Assessors regularly. Assessments aim to make sure **requirements of the relevant animal specific standards are being met** and to **highlight opportunities for improvement**.



## Preparation

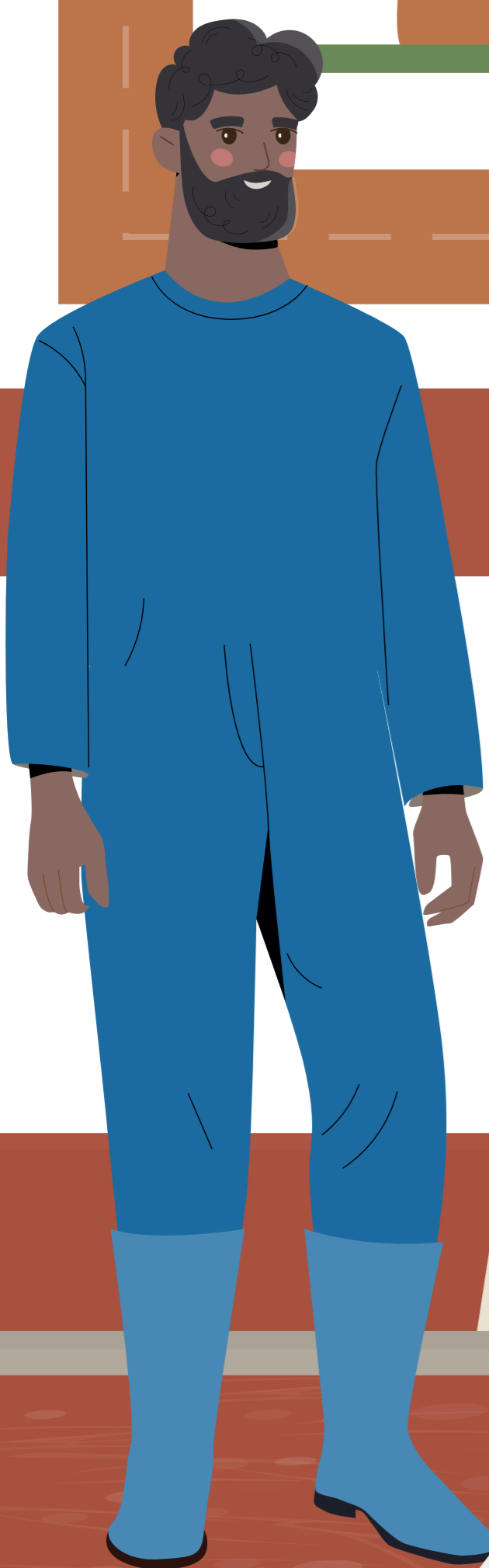
**1.** Our Certification Team schedules an assessment with the producer.



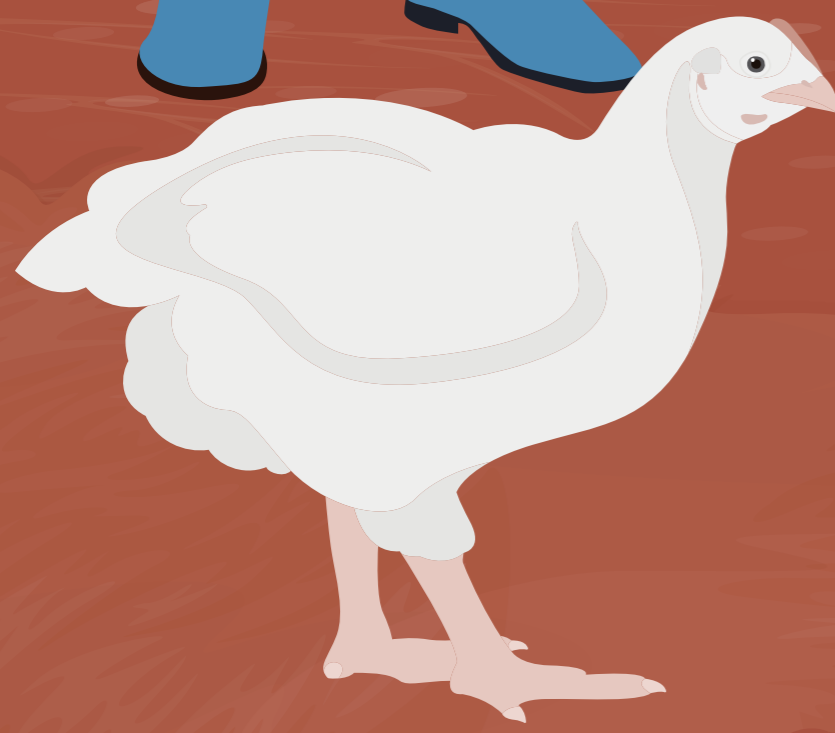
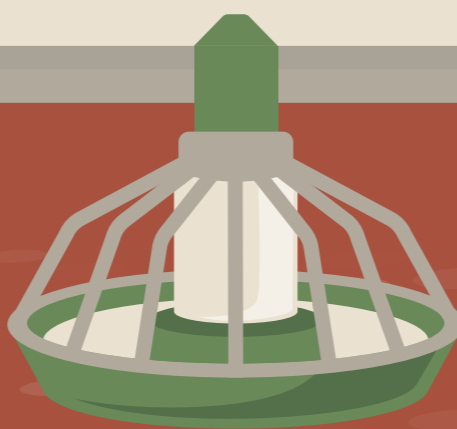
**2.** The Certification Team reviews records and documentation relevant to the requirements of the specific standard.

## At the farm

**3.** The Assessor arrives on farm, making sure to adhere to biosecurity measures to protect animals from infectious diseases.

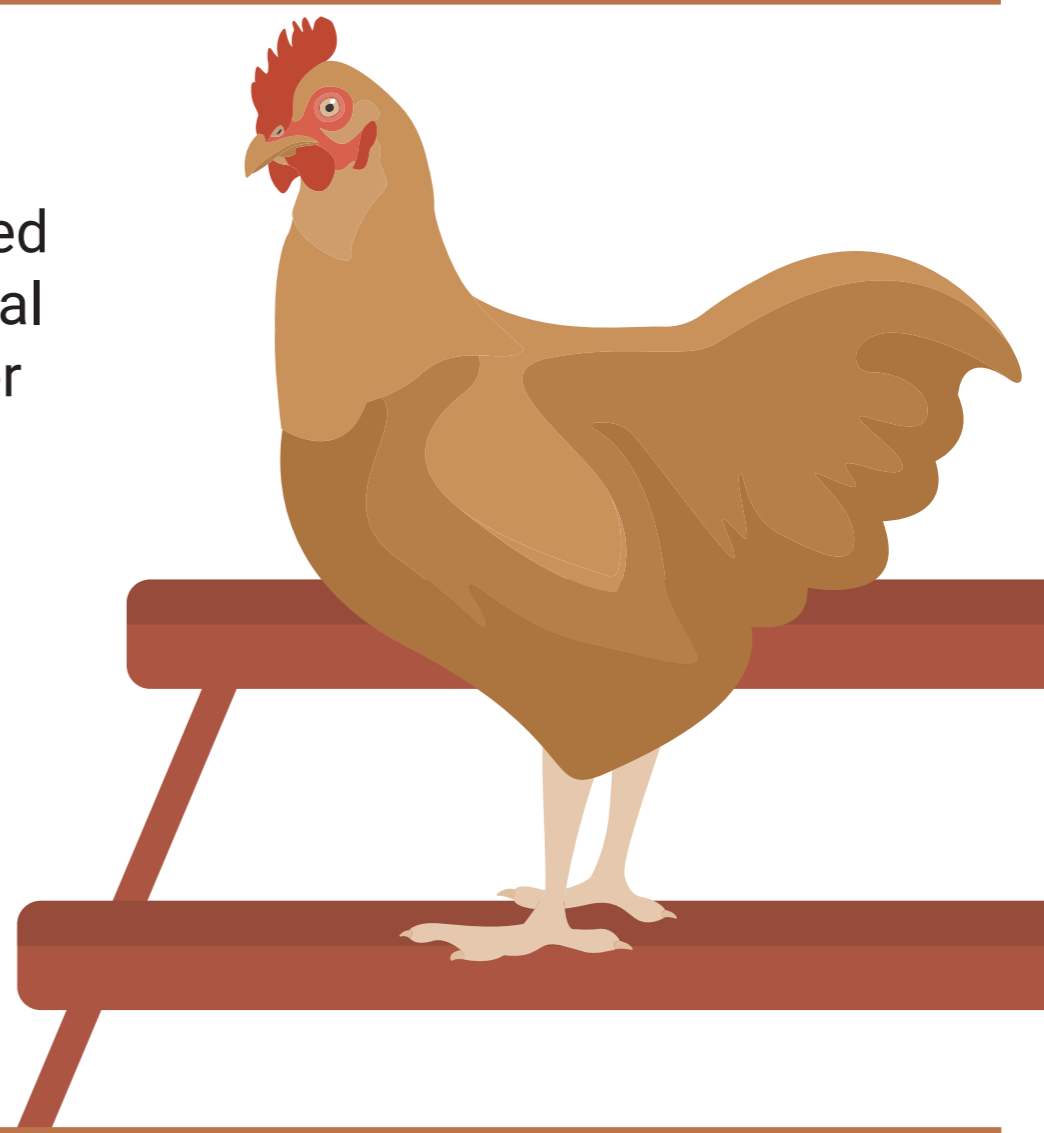
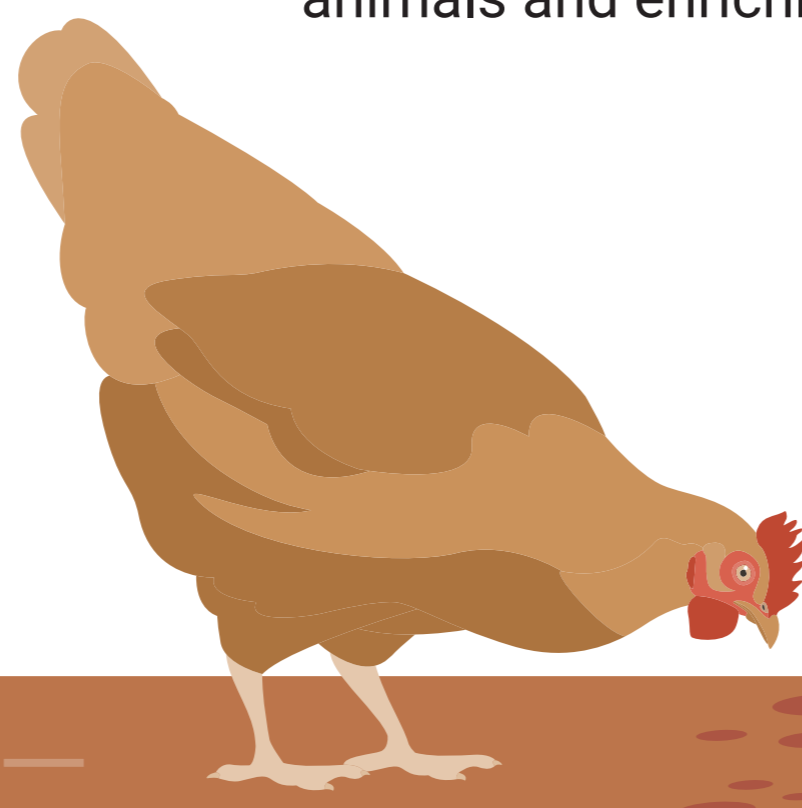


**4.** The Assessor then observes the environment where animals live.



- ✓ Do chickens and pigs have access to food, water, dry bedding and shelter?
- ✓ Does data show the required oxygen levels for salmon?
- ✓ Is appropriate lighting provided so the animals can be active during the day and rest well at night?

**5.** Animal behaviour is also observed including ability to express natural behaviours, interaction with other animals and enrichment.



**6.** The Assessor then checks paperwork to ensure staff training, animal welfare checks and veterinary care has been carried out.



## Reporting

**7.** The Assessor sends an assessment report back to the Certification Team, which details how the farm conforms with the standard and if there are any non-conformances that require corrective action.



**8.** The Certification Team provides the report to the producer and works with them on any necessary improvements noted in the assessment findings.